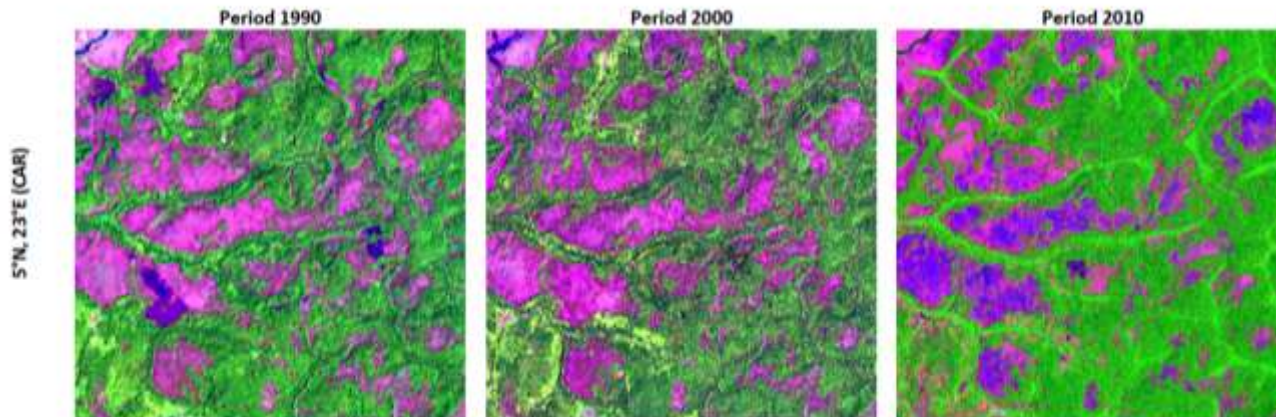


Regional forest monitoring with remote sensing on basis of a regular sampling grid

A.Verhegghen, B. Desclée, F. Achard, H. Eva, P. Defourny, P. Mayaux

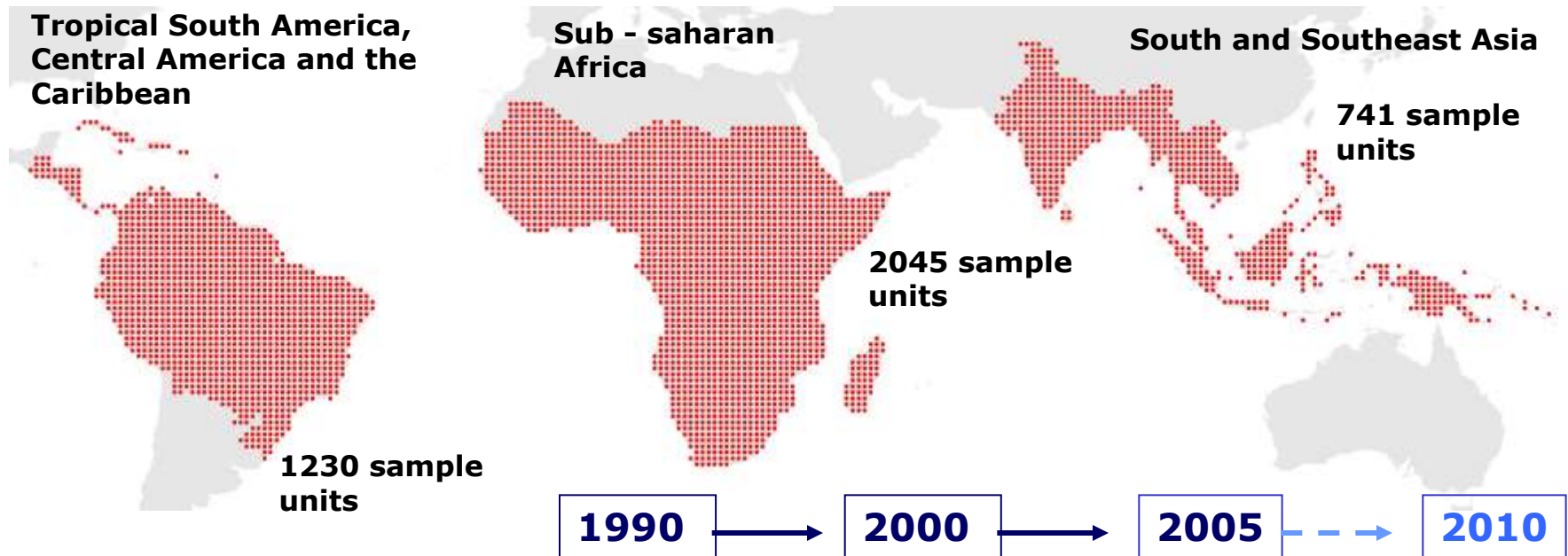
Joint Research Centre

Université catholique de Louvain



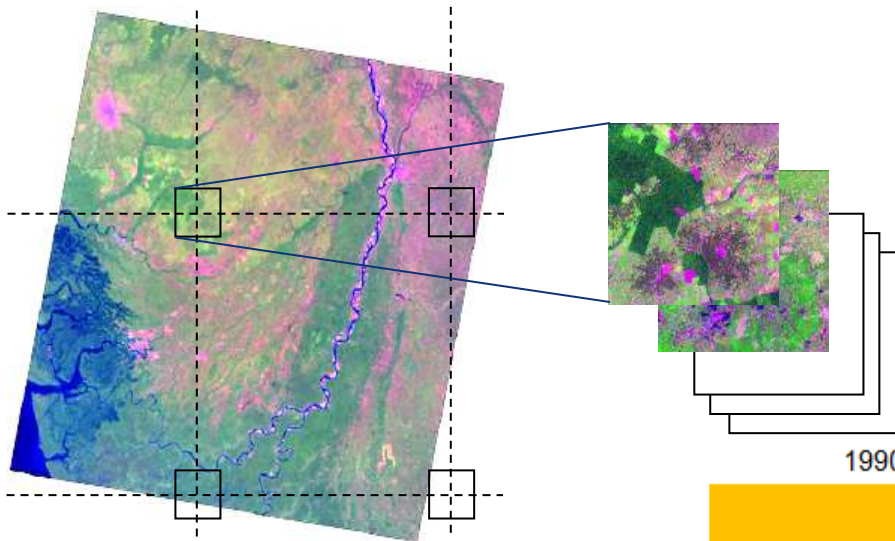
Global Monitoring of Tropical Forest Cover Changes

GLOBE-TREES: Systematic sampling at every full degree confluence point on land in the tropics (covering 106 countries) -> 4016 sample units



**Global (pan-tropical) and (sub-)regional forest cover change statistics
Input for FAO's global Forest Resource Assessment 2010 – Remote Sensing
Survey (FRA 2010 – RSS)**

Data selection

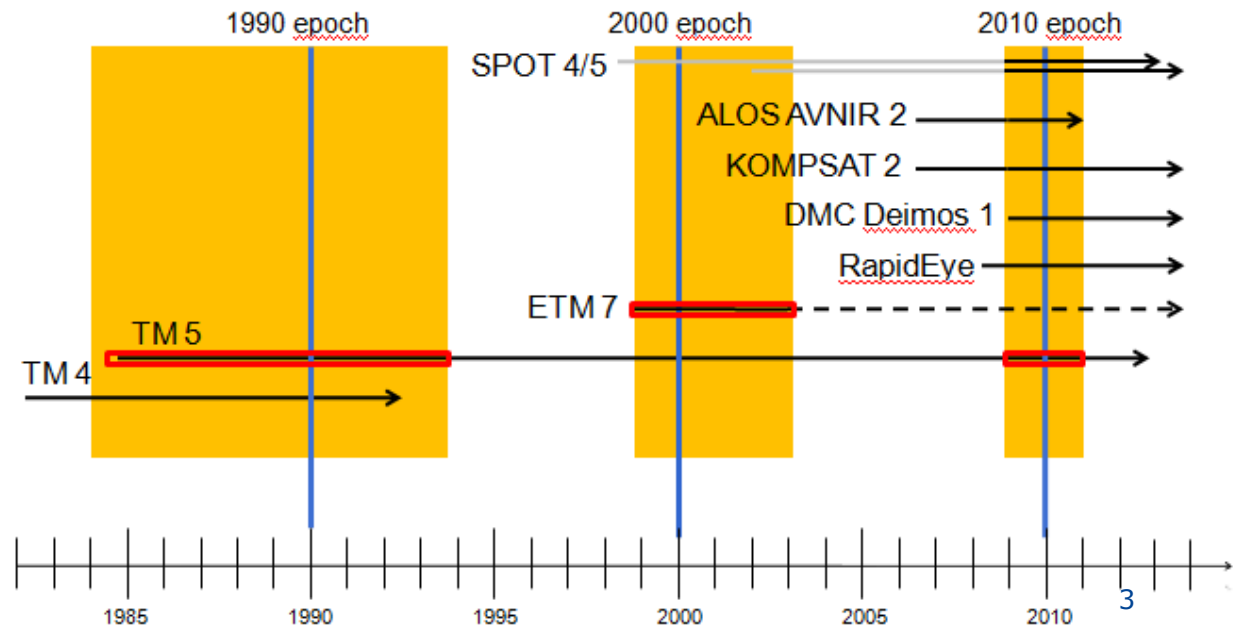


Sample sites automatically extracted

Sample frame: Geographical grid
(a sample at each $1^{\circ} \times 1^{\circ}$)

Sample size: $10 \times 10 \text{ km}^2$

- 1990: 1984-1994
- 2000: 1997-2003
- 2010: 2008-2012



Land cover class definitions

(in accordance with FAO)

	TREE COVER		BURNT COVER
	TREE COVER MOSAIC		WATER
	OTHER WOODED LAND		CLOUD & SHADOW
	OTHER LAND COVER		NO DATA
			UNCLASSIFIED

Tree cover: plants with wooden stems ≥ 5 m, ground coverage higher than 30%, $\geq 70\%$ tree cover portion in mapping unit (MU)

Tree cover mosaic: between 30% and 70% tree cover portion in MU

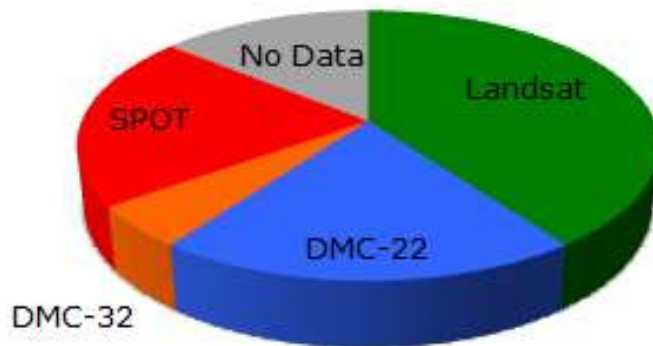
Other wooded land: plants with wooden stems between 0.5 and 5 meters, above 50% ground coverage, above 50 % portion of MU

Other land cover: urban areas, bare soil, agricultural areas, sand, rock, with or without some sparse cover of trees or other wooded land

Forest Cover Changes in Central Africa

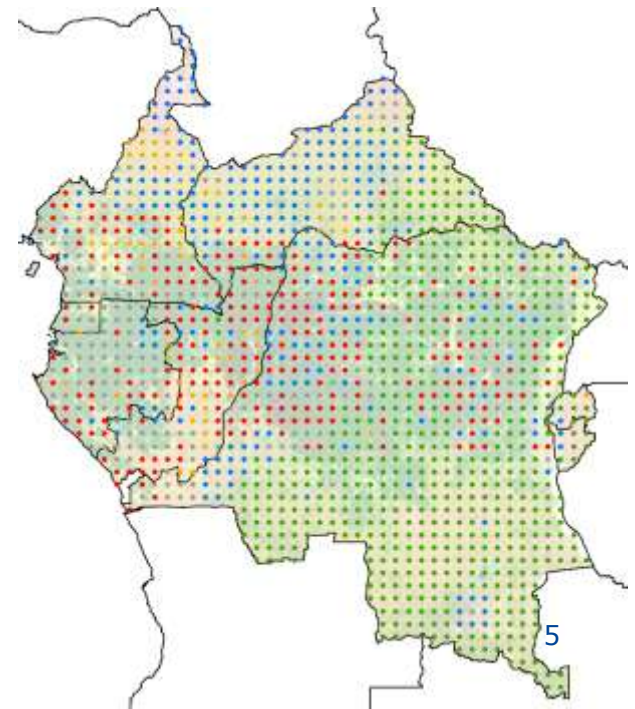
Period of monitoring 1990 – 2000 - 2010

- Harmonization of data UCL/TREES 1990-2000
- Regional estimations for the Congo Basin (Mayaux et al. 2013)
- National estimations (to be published in next SOF – B.Desclee)
- Image availability for 2010

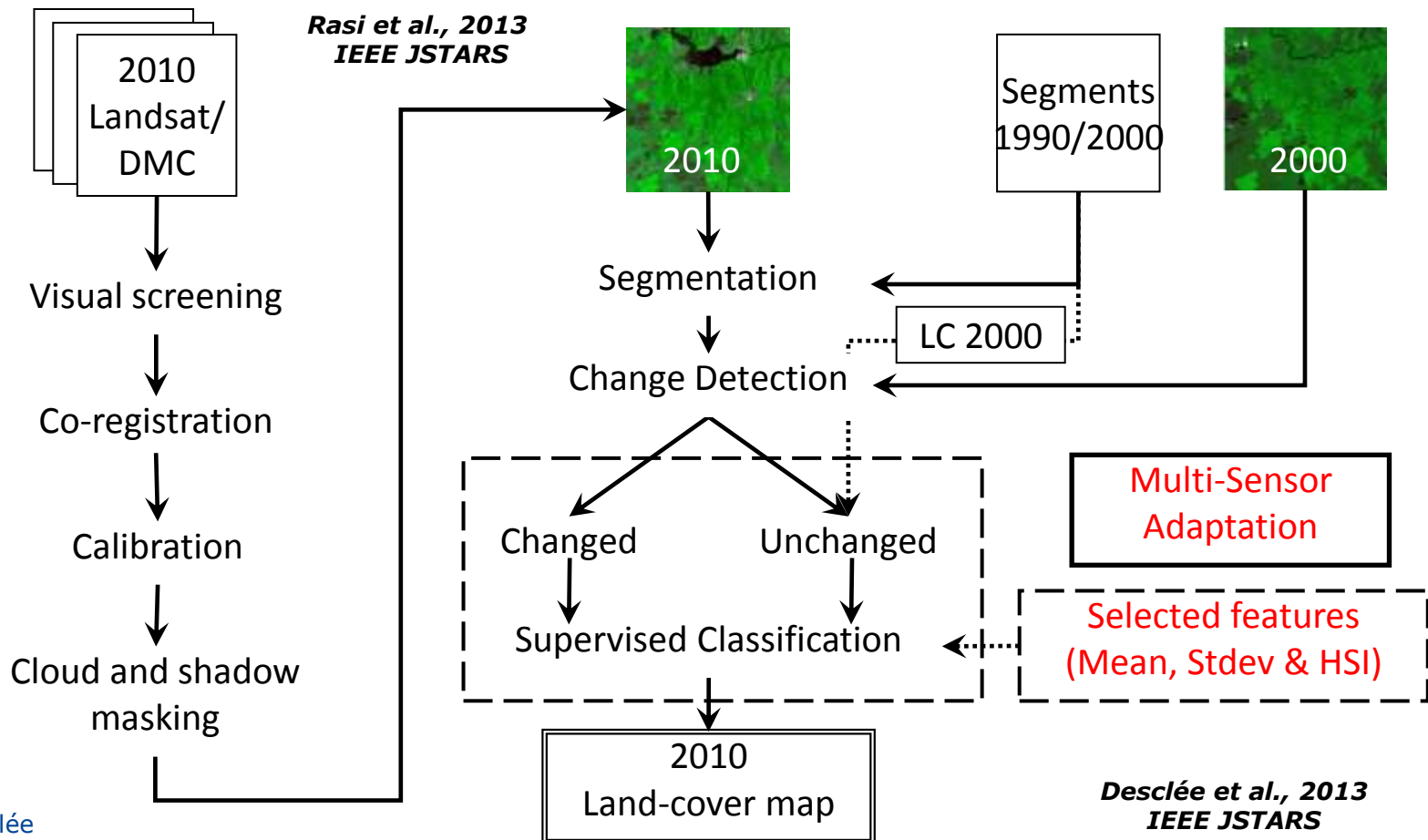


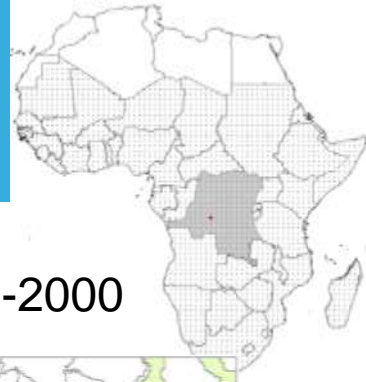
Sensor

- Landsat
- DMC-22
- DMC-32
- SPOT
- No Data



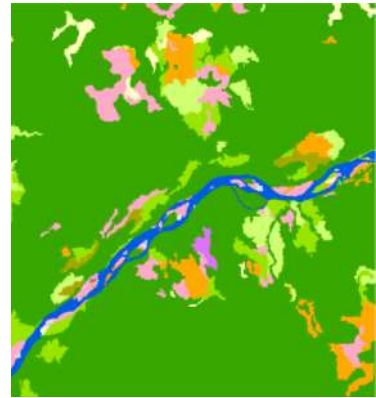
Adapted JRC process chain





Land cover maps

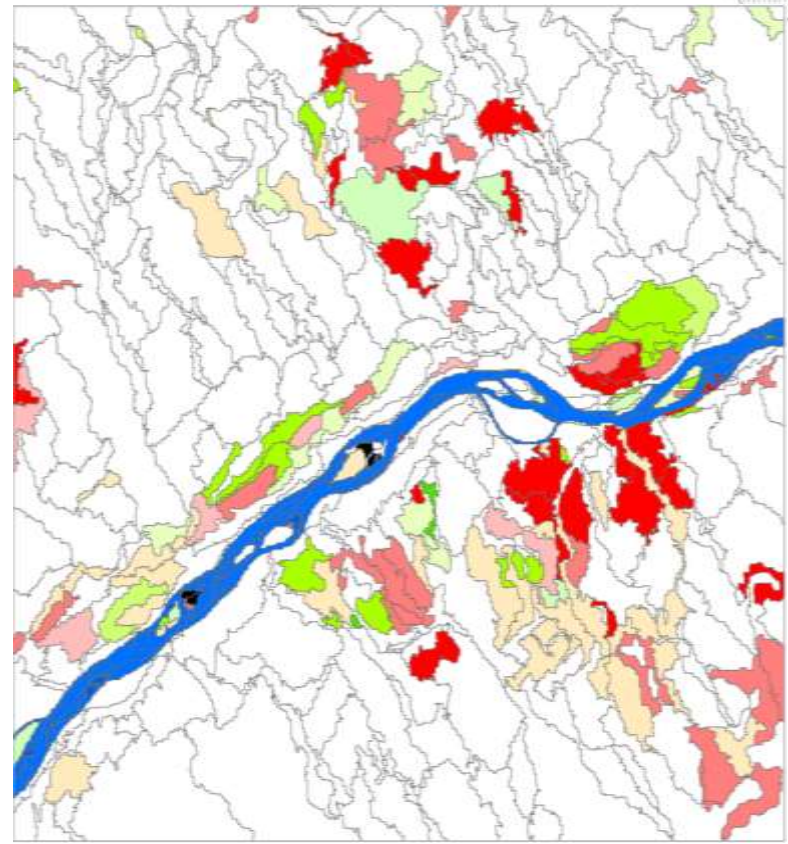
1990



2000


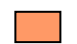






Change Map 1990-2000



-  TREE COVER
-  TREE COVER MOSAIC
-  OTHER WOODED LAND
-  OTHER LAND COVER

-  BURNT COVER
-  WATER
-  CLOUD & SHADOW
-  NO DATA
-  UNCLASSIFIED

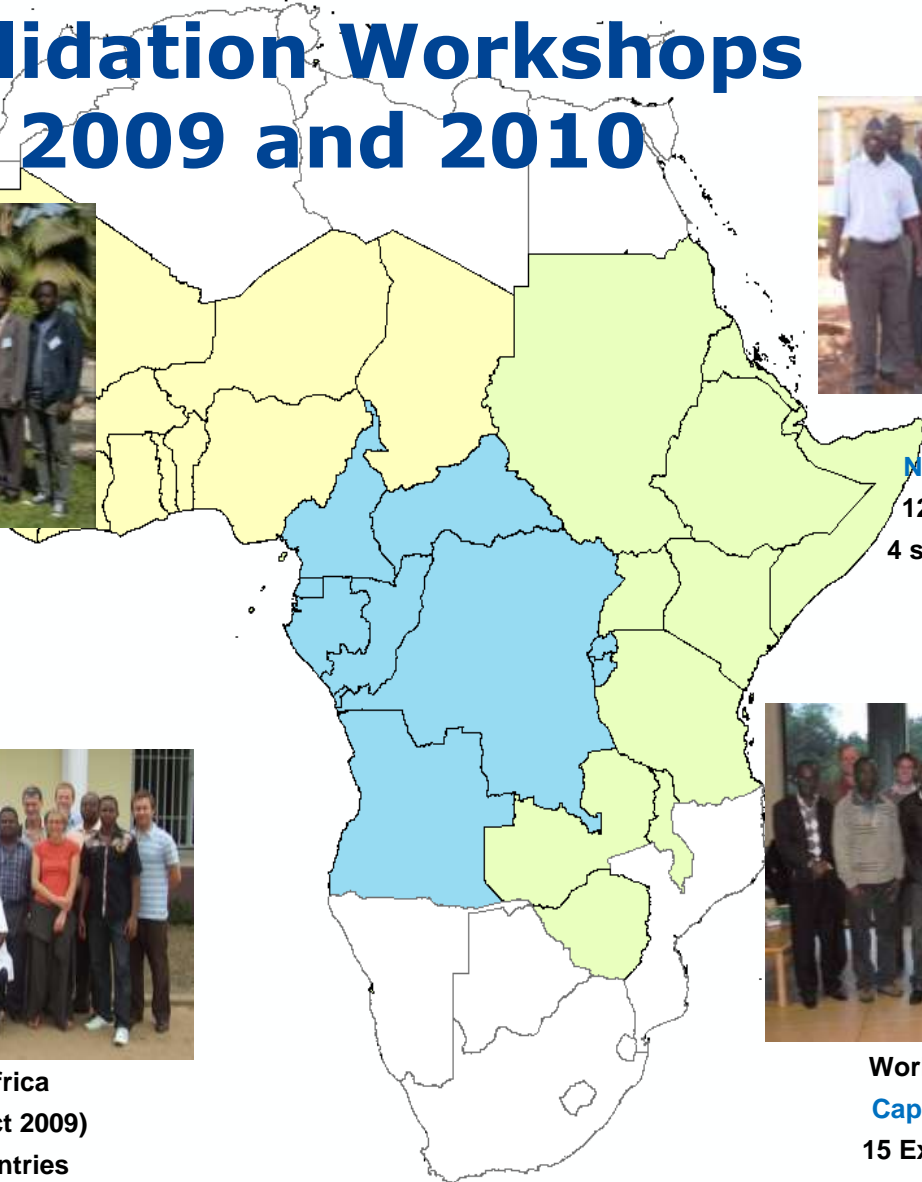
-  LCC From Forest
-  LCC From Forest
-  LCC From Forest

-  LCC To Forest
-  LCC To Forest
-  LCC To Forest

 No change



Regional Validation Workshops for Africa in 2009 and 2010



Workshop West Africa
Dakar (08-13 March 2010)
15 Experts from 14 countries
3 JRC support staff



Workshop East Africa
Nairobi (28 Sept- 2 Oct 2009)
12 Experts from 10 countries
4 support staff including 3 JRC



Workshop Central Africa
Kinshasa (28 Sept- 9 Oct 2009)
15 Experts from 7 countries
6 support staff from FAO, UCL & JRC



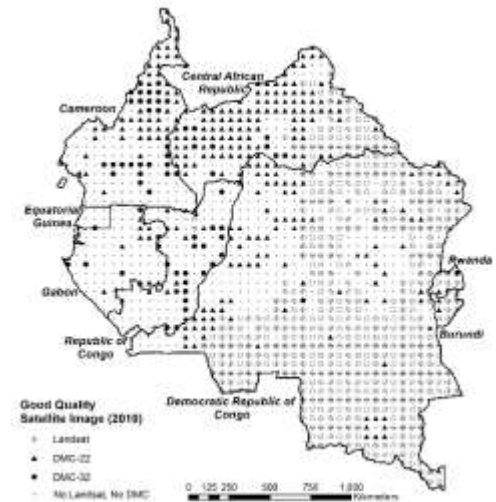
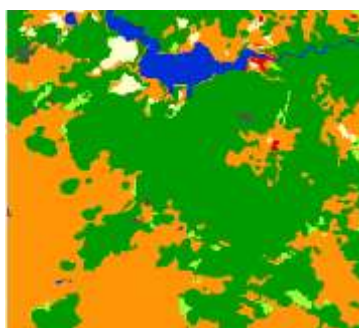
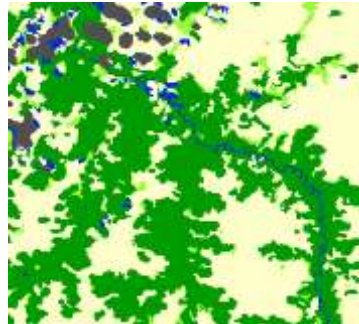
Workshop Southern Africa
Cape Town (3-7 May 2010)
15 Experts from 8 countries
3 support staff including 2 JRC

Production of deforestation estimates

Processing and Validation of 548 sites

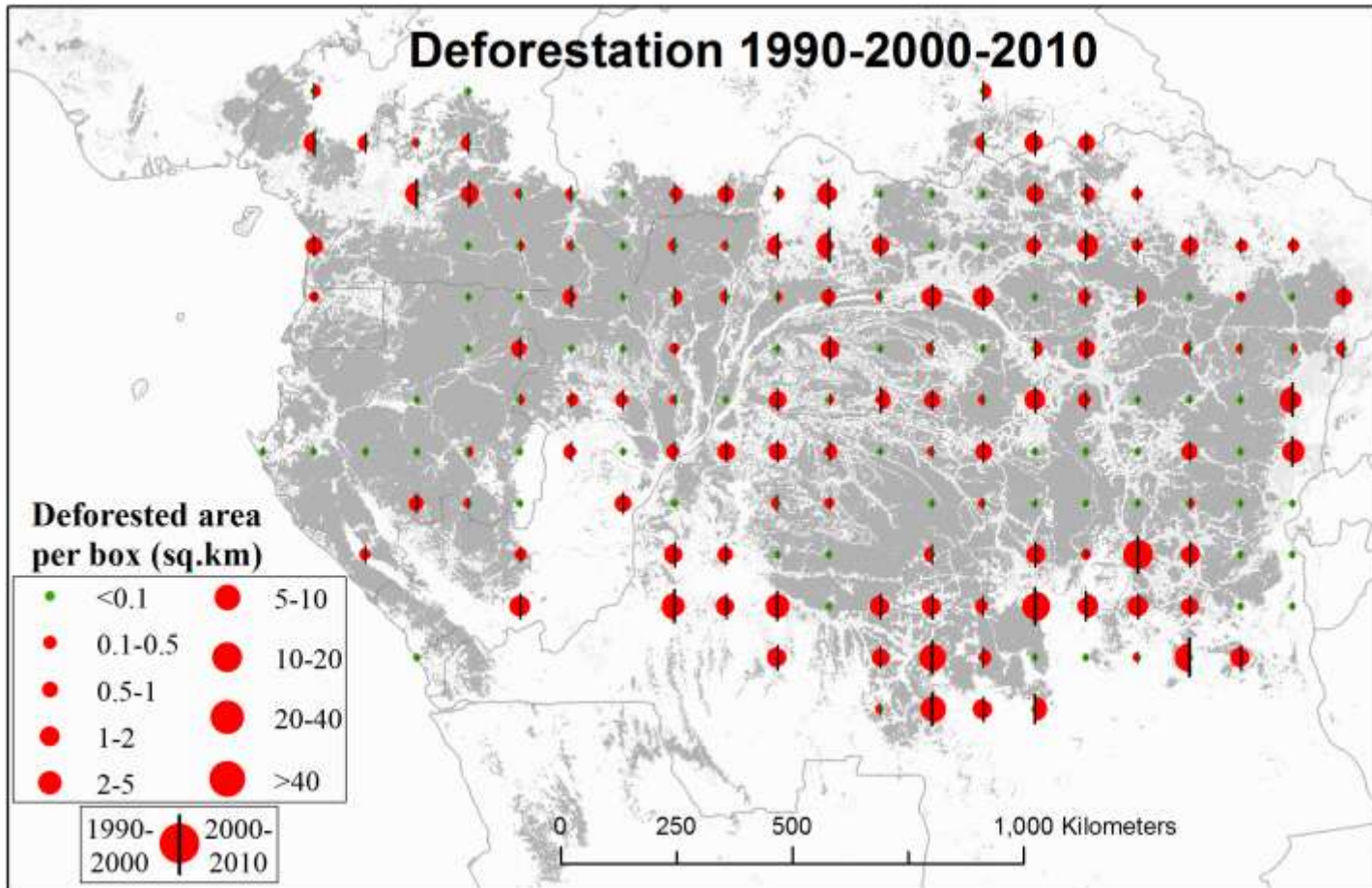
DMC 2010

Adapted



Sensor	Samples	Percentage
Landsat	178	48%
DMC-22	169	46%
DMC-32	60	16%
SPOT	117	32%
No Data	24	7%
	548	100%

Results for the Congo Basin

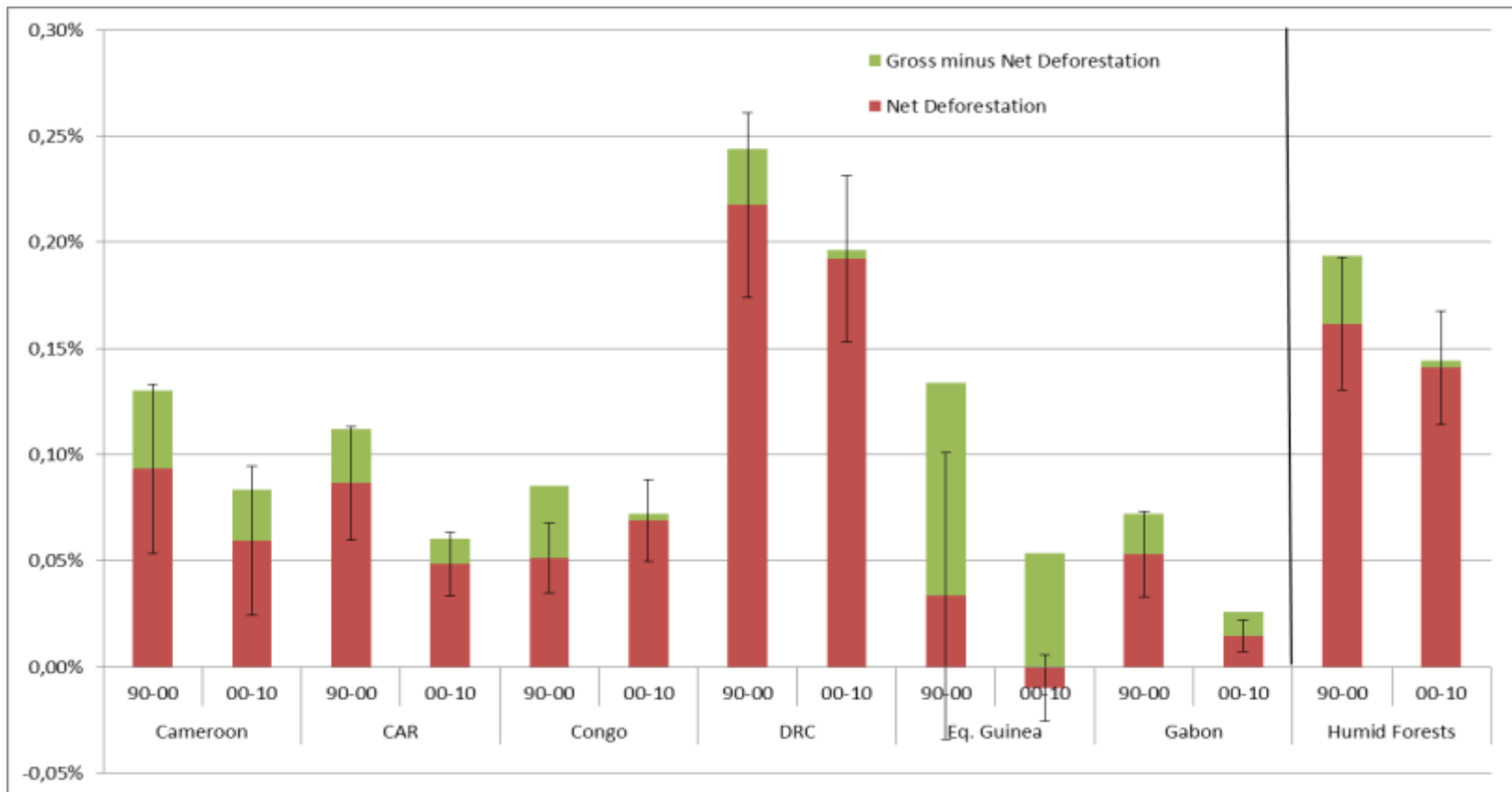


Annual Deforestation Rates

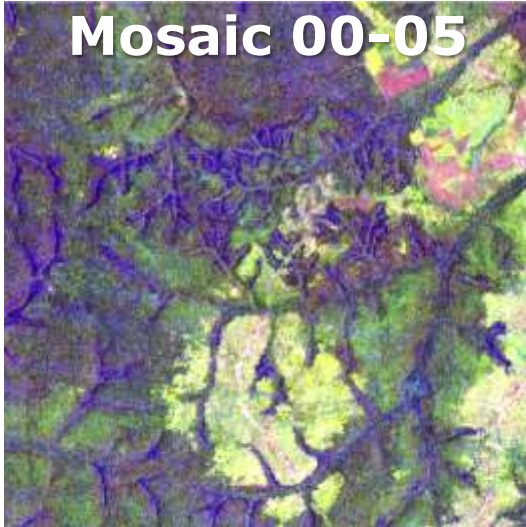
	Country	n	Gross Deforestation	Gross Reforestation	Net Deforestation
1990-2000	Cameroon	45	0.13% (0.04%)	0.04% (0.01%)	0.09% (0.04%)
	Congo	65	0.09% (0.02%)	0.03% (0.01%)	0.05% (0.02%)
	Gabon	63	0.07% (0.02%)	0.02% (0.00%)	0.05% (0.02%)
	Eq. Guinea	7	0.13% (0.08%)	0.10% (0.06%)	0.03% (0.07%)
	CAR	26	0.11% (0.03%)	0.03% (0.01%)	0.09% (0.03%)
	DRC	114	0.24% (0.05%)	0.03% (0.01%)	0.22% (0.04%)
	Congo Basin		0.19% (0.03%)	0.03% (0.01%)	0.16% (0.03%)
2000-2010	Cameroon	45	0.08% (0.03%)	0.02% (0.01%)	0.06% (0.04%)
	Congo	65	0.07% (0.02%)	0.00% (0.00%)	0.07% (0.02%)
	Gabon	63	0.03% (0.01%)	0.01% (0.00%)	0.01% (0.01%)
	Eq. Guinea	7	0.04% (0.03%)	0.05% (0.03%)	-0.01% (0.02%)
	CAR	26	0.06% (0.02%)	0.01% (0.00%)	0.05% (0.02%)
	DRC	114	0.20% (0.04%)	0.00% (0.00%)	0.19% (0.04%)
	Congo Basin		0.14% (0.03%)	0.00% (0.00%)	0.14% (0.03%)

The Forests of the Congo Basin - State of the Forest 2014 (to be published)

Congo Basin Deforestation

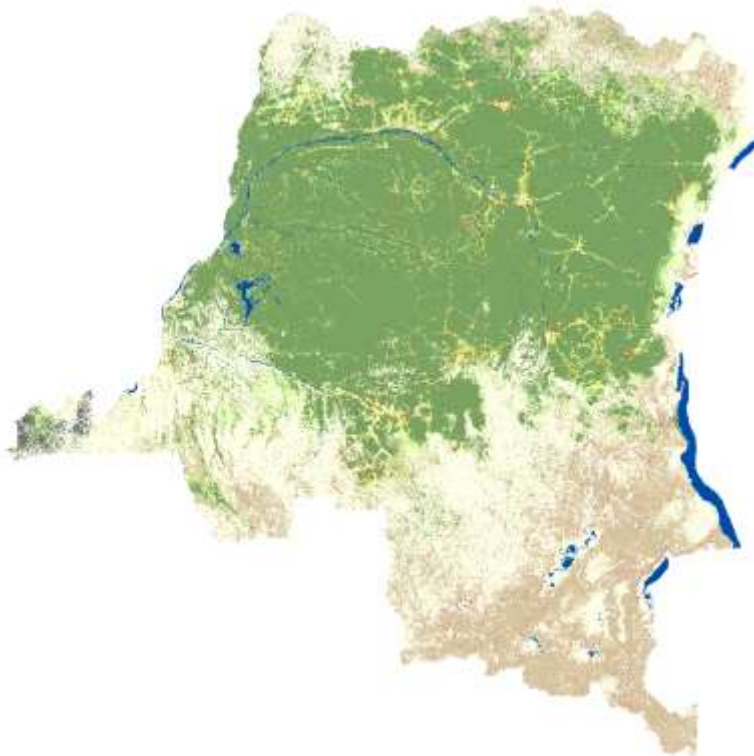
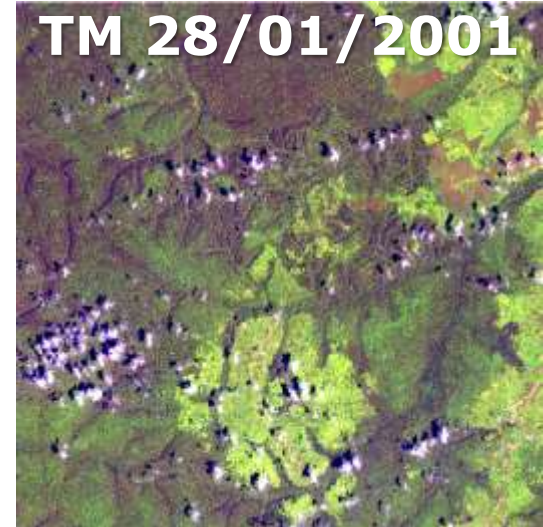


Mosaic 00-05



DRC FACET Atlas

TM 28/01/2001



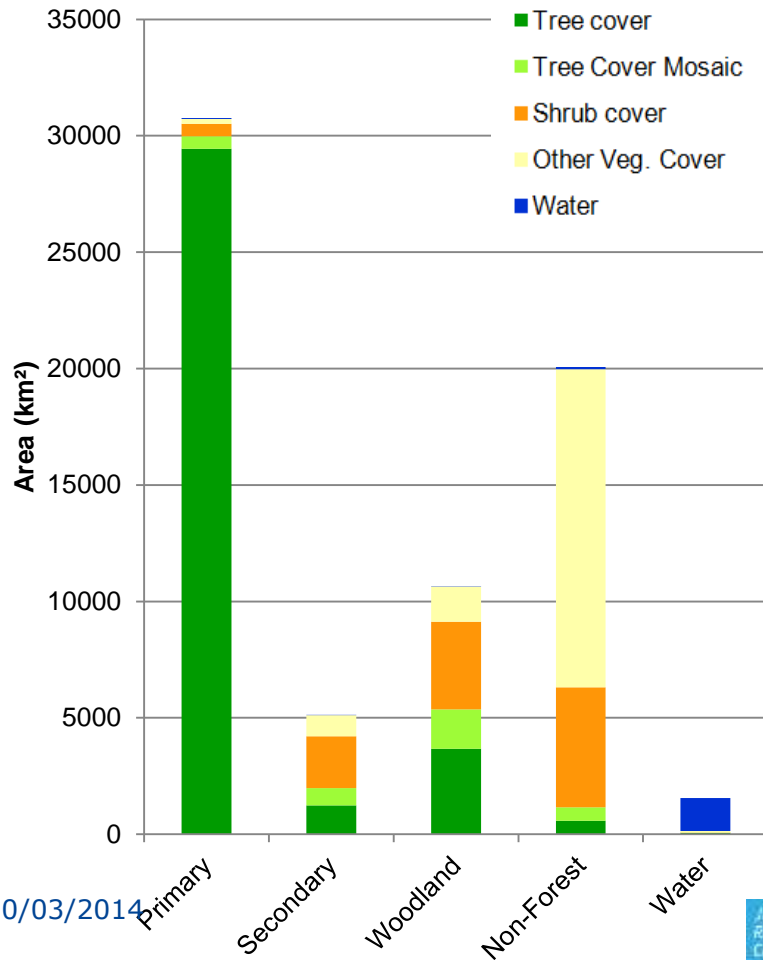
FACET map

Potapov et al., 2012 - RSE

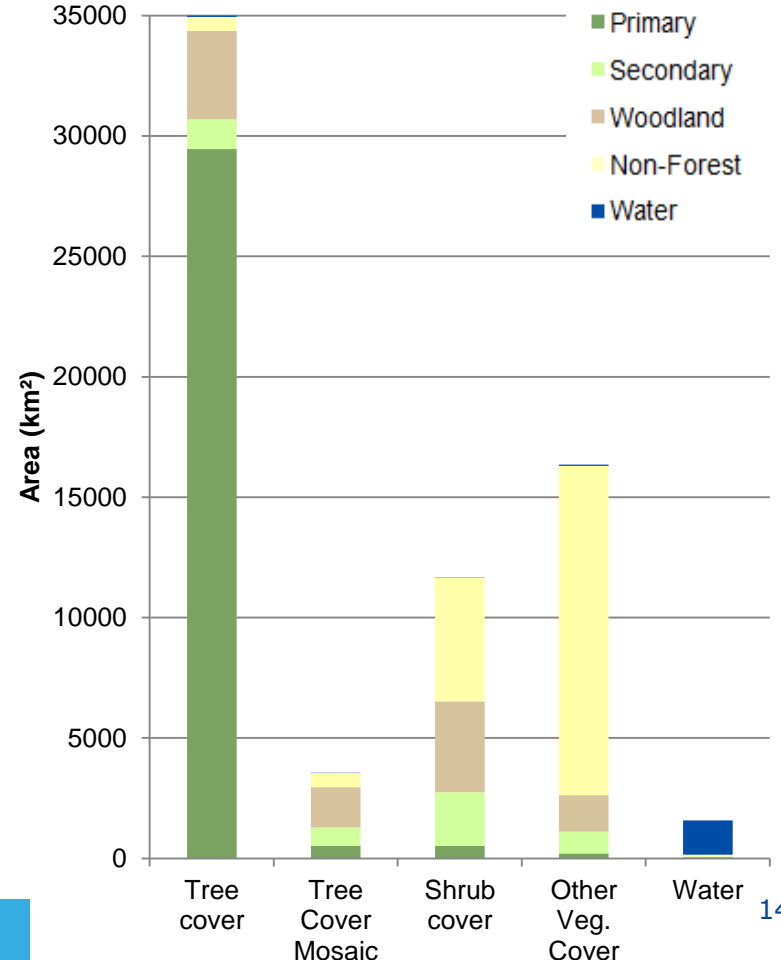
TREES map

Map Comparison for 2000

FACET vs. TREES



TREES vs. FACET



Conclusion and perspectives

- Forest cover change estimates at regional and national scales for 1990-2000-2010
- Multi-sensor analysis (Landsat, Spot, DMC,...)
- Implication of regional experts

- Accuracy assessment with high resolution data
- Comparison with other forest change products
- Preparing new sensors (Sentinel-2): time series approach