

Disponibilité des images satellites

Douglas M. Muchoney. Ph.D.

USGS Climate and Land-Use
Change

Conférence internationale sur les
changements d'occupation du sol
et de biomasse forestière en
Afrique centrale

20 et 21 Mars, Libreville, Gabon



U.S. Geological Survey
U.S. Department of Interior

Overview

- USGS (Douglas Muchoney)
- OSFAC (Landing Mane)
- IGN (Camille Pinet)
- AGEOS (Aboubakar Mambimba)

Overview

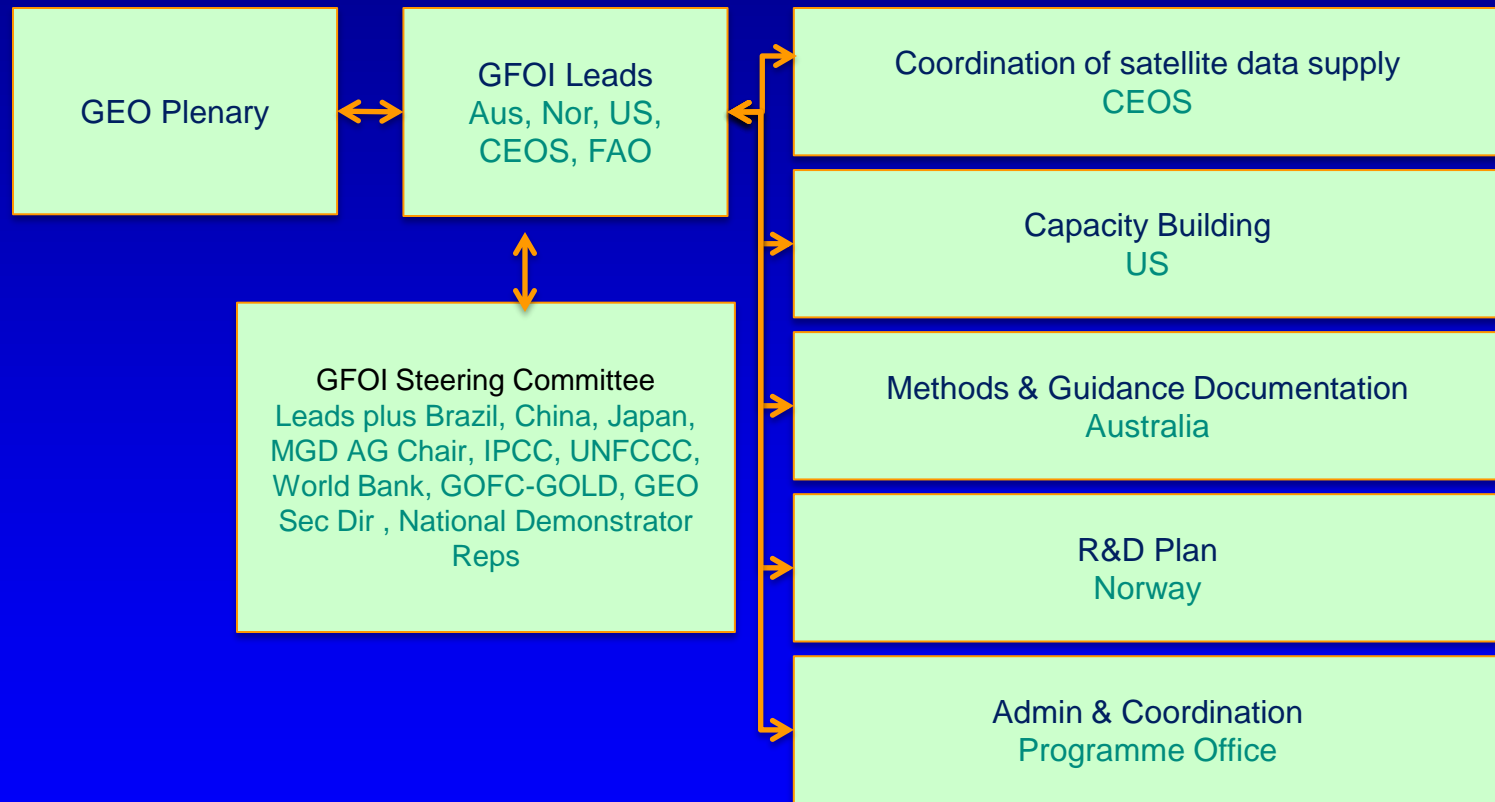
- Quelle stratégie doit-on mettre en place pour tirer le meilleur parti de la complémentarité des futurs capteurs satellitaires (Sentinel, Landsat LDCM ...) et leur meilleure disponibilité (station de Libreville)?
Quelles sont les politiques actuelles de données pour les différents systèmes de surveillance, dont le coût, l'accès et de prétraitement?
- Etat de la situation sur la station de réception du Gabon

Overview

- Stratégies d'accès, d'interopérabilité et d'acquisition de données
- Quelles sont les méthodes disponibles pour faire progresser la production de données sur les changements d'occupation du sol? Comment expliquer les différences de méthodologies, de définitions de classes et d'unités cartographiques minimales? Comment pouvons-nous évaluer la validité des produits disponibles?

Global Forest Observations Initiative

Development of a governance structure around the 5 components



GFOI and FCT elements in all components

GEO Capacity Building: Strategic Target

Before 2015, GEO aims to: Enhance the coordination of efforts to strengthen individual, institutional and infrastructure capacities, particularly in developing countries, to produce and use Earth observations and derived information

GFOI CB objectives

Enhance the capacity of countries to initiate forest and terrestrial carbon assessment and monitoring, and to use management methodologies and technologies.

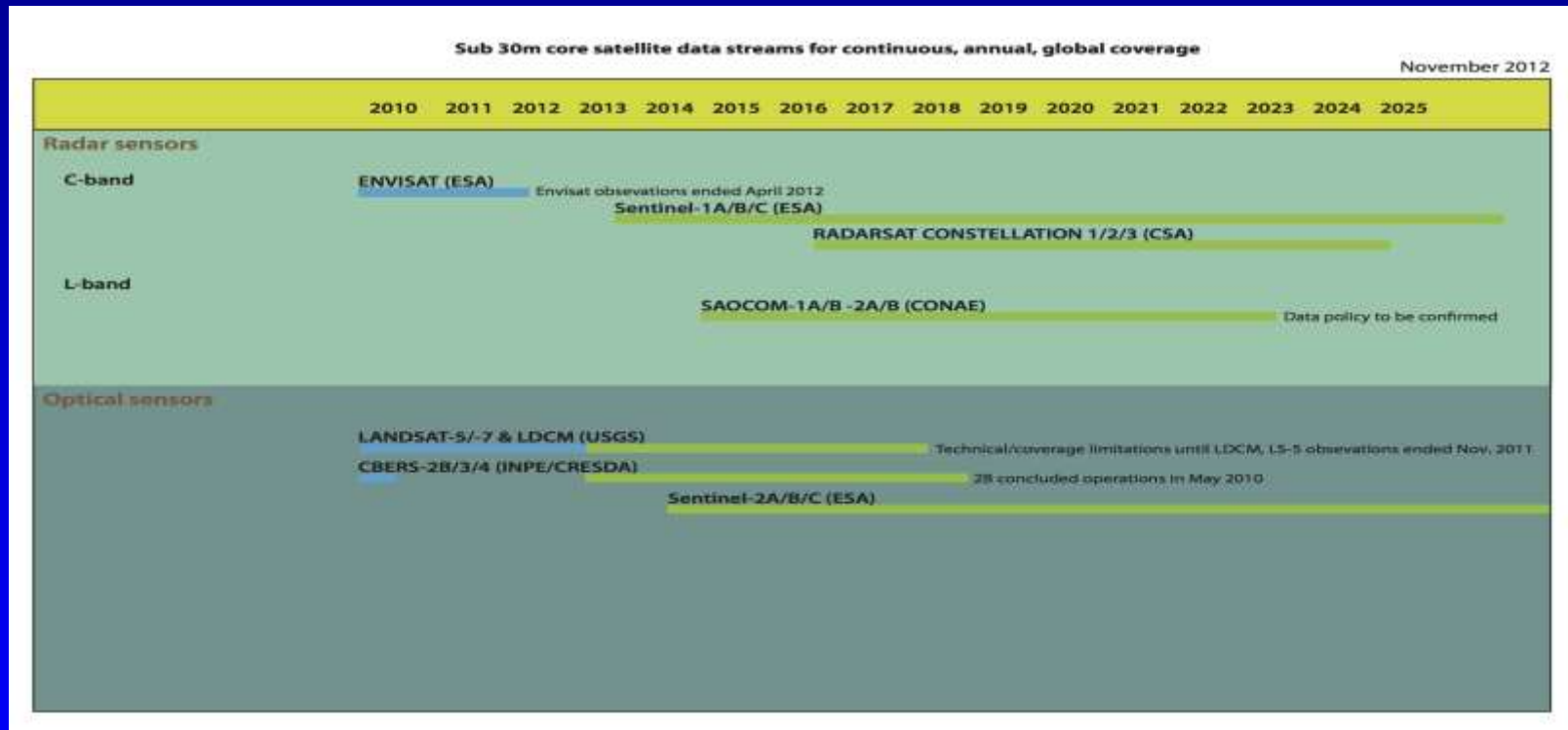
Strengthen the community of forest and terrestrial carbon technical experts.

Coordination of satellite data supply

- Fundamental to GFOI objectives
- Supports all countries participation in reporting
- Ad-hoc SDCG established by CEOS in support of GFOI needs with good participation from necessary agencies
- Good progress towards baseline global strategy
- Anticipate the report before SIT-28
- SDCG is an important new capability for CEOS/GEO



Coordination of satellite data supply via CEOS



Gabon and the Congo Basin



Gabon – Key Activities

- Support to strengthen quantification of forest carbon stocks
- Contribute to improving the accuracy of forest carbon stock assessment through the quantification of soil carbon stocks
- Capacity to process, archive and manage spatial data



Congo Basin Regional Activities

Background

- Congo Basin is globally important forest area with low capacity
- Planned SilvaCarbon activities could add significant value to assist countries in ongoing forest monitoring programs



Opportunities to leverage

- USFS (CARPE), FAO and JICA support on forest pre-inventory;
- CARPE 3 starting with longer-term engagement plan on sustainable forest management and climate change focus;
- Regional State Department program on MRV capacity building
- U.S. taking lead on Congo Basin Forest Partnership Facilitation



Douglas Muchoney (USGS): dmuchoney@usgs.gov

www.silvacarbon.org

www.gfoi.org